

## PRODUCT DESCRIPTION

- Simple assembly
- Good stabilization of profile connections
- Can build polygonal lighting fixtures

Fill empty fields

Product nr.

Fixture type

Company

Job name

Date



## TECHNICAL SPECIFICATION

### Application

- for straight and angular connections of profiles from KLUŚ equipped with a “small lock” and for stabilizing the ends of profiles combined into strings
- can create T-, X-, Y-shaped fixtures from profiles equipped with 3 ZM sockets

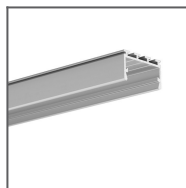
### Assembly

- with pressure screws

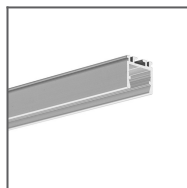
### Additional information

- stainless steel sheet, 1.5 mm thick

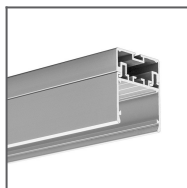
**RELATED PROFILES**



GIZA-LL profile  
Ref: C0758



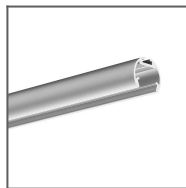
OPK-4 Profile  
Ref: C0370



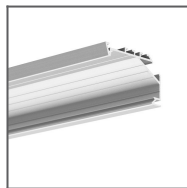
3035 Profile  
Ref: 18039



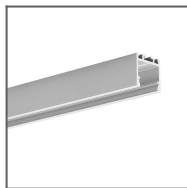
JAZ Profile  
Ref: B8547



OLEK Profile  
Ref: B8505



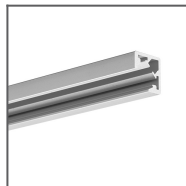
KOPRO-30 Profile  
Ref: B7890



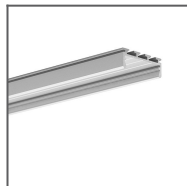
PDS-ZM Profile  
Ref: B7696



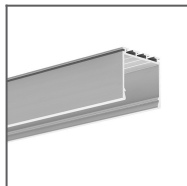
GLAD-45 Profile  
Ref: B7009



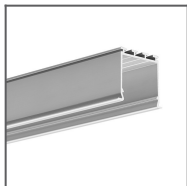
KUBIK-45 Profile  
Ref: B7697



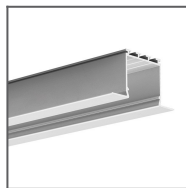
GIZA Profile  
Ref: B5556



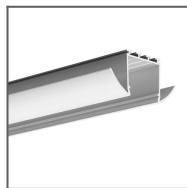
LIPOD Profile  
Ref: B5554



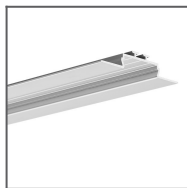
LOKOM Profile  
Ref: B5553



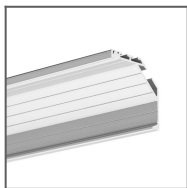
LARKO Profile  
Ref: B5552



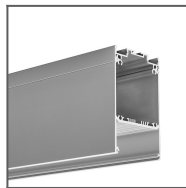
LESTO Profile  
Ref: B5551



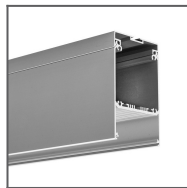
OPAC-30 Profile  
Ref: B6164



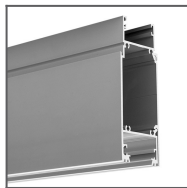
KOPRO Profile  
Ref: B6367



DES Profile  
Ref: 18030



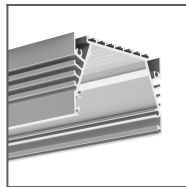
GLADES Profile  
Ref: 18036



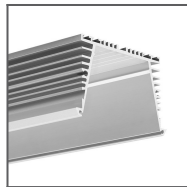
KIDES-DUO Profile  
Ref: 18032



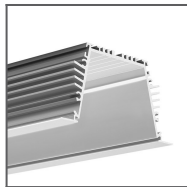
KIDES Profile  
Ref: 18031



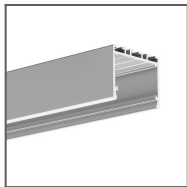
SEPOD Profile  
Ref: B6593



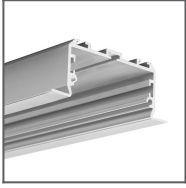
SEKOMA Profile  
Ref: B6595



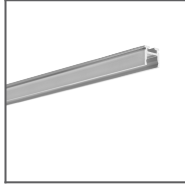
SEKODU Profile  
Ref: B6597



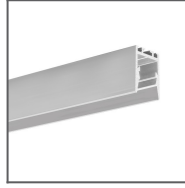
3035-O Profile  
Ref: B8441



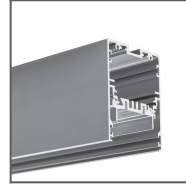
LARKO-50 Profile  
Ref: C0756



PIKO-ZM Profile  
Ref: C1168



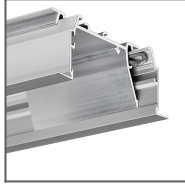
PDS-ZMG Profile  
Ref: C1418



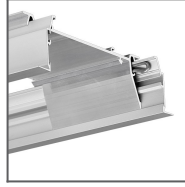
MOD-50 Profile  
Ref: 18047



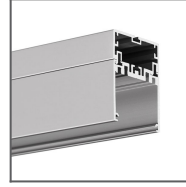
PDS-ZM-PLUS  
Profile  
Ref: C2056



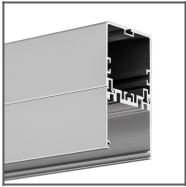
RAM-KOL-50  
Profile  
Ref: 18060



RAM-KOL-100  
Profile  
Ref: 18062



4050 Profile  
Ref: 18050



4050-W Profile  
Ref: 18051